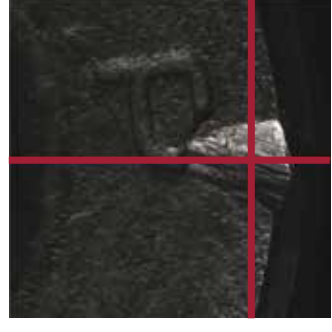


IMAGE ACQUISITION PROTOCOLS

EJECTOR MARKS & RIMFIRE

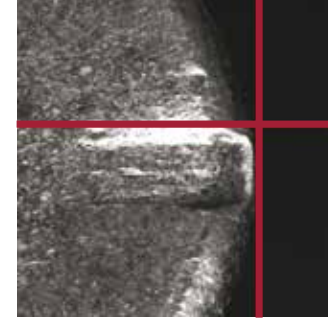
EJECTOR MARK POSITIONING

Align the rim of the cartridge case with the vertical red guideline at the top and bottom of the image. The horizontal guideline should bisect the middle of the ejector mark.



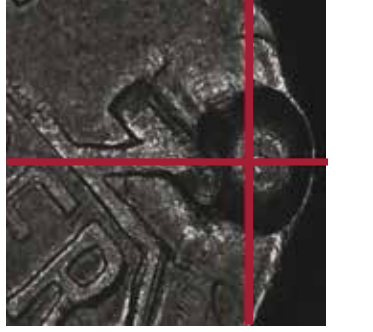
RIMFIRE (RECTANGULAR) POSITIONING

Position the Firing Pin Impression in the "bottom left" quadrant of the window, with the upper edge of the impression parallel to the horizontal red line and the "right hand" edge of the impression touching the vertical red line.



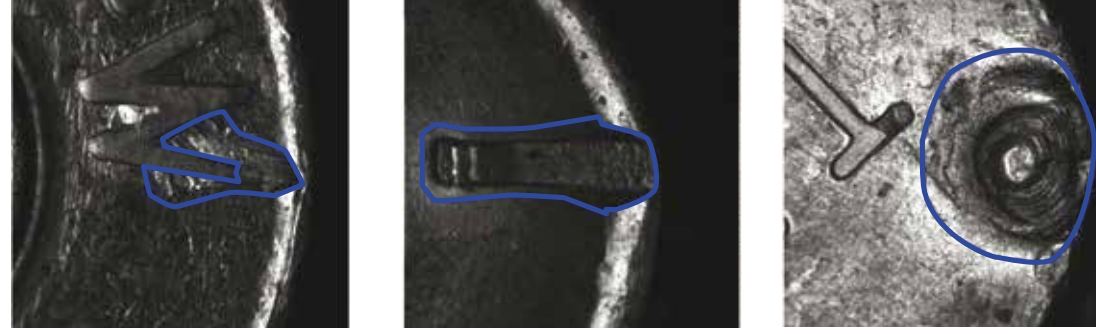
RIMFIRE (CIRCULAR) POSITIONING

Align the rim of the cartridge case with the vertical red guideline at the top and bottom of the image. The horizontal guideline should bisect the middle of the Firing Pin Impression.

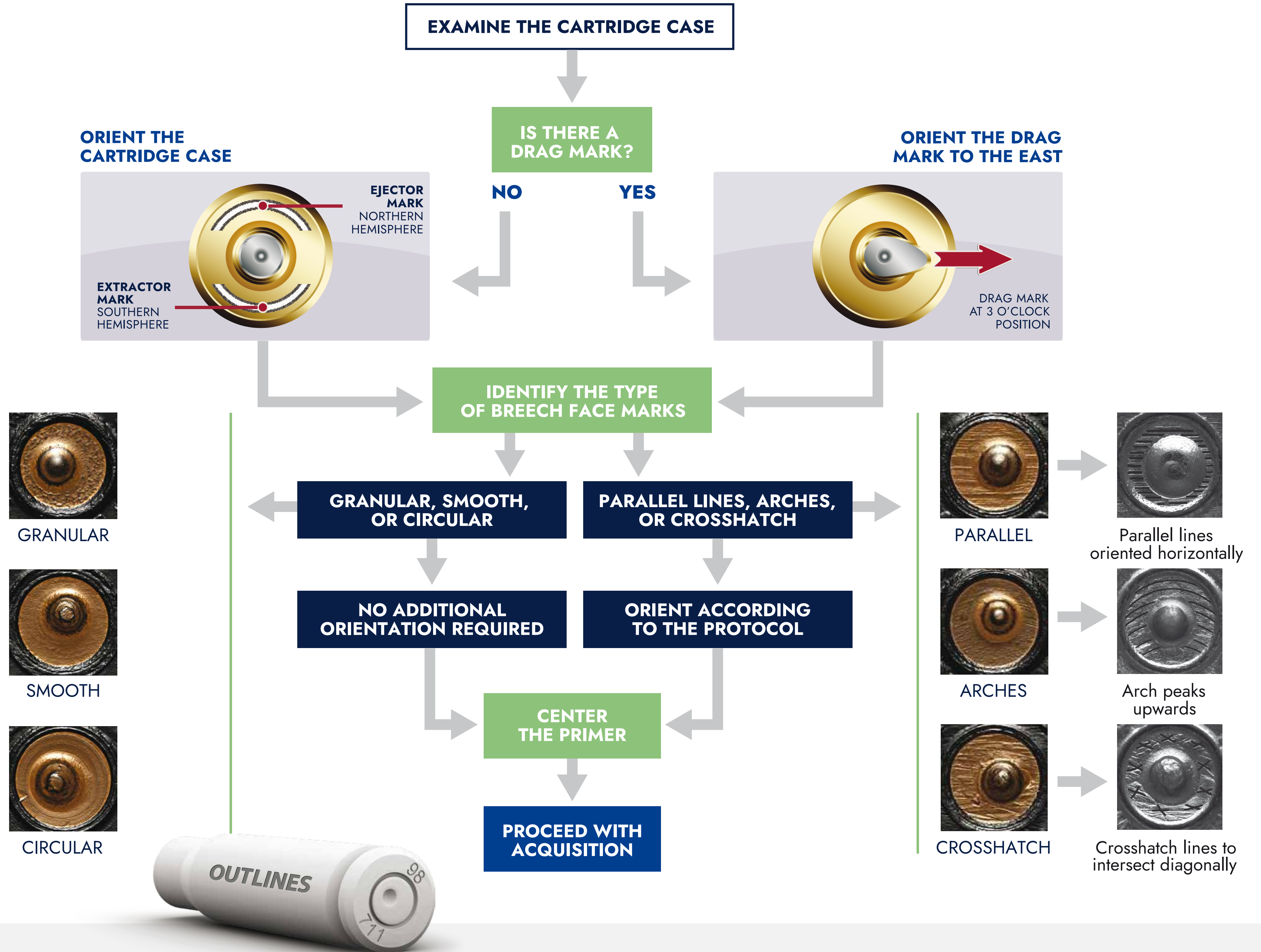


TRACING OUTLINES

Trace the outline of the impression tightly along the outer rim and where ammunition marks such as letters and numbers are present, but otherwise leave a gap of up to 120 microns (approx. 1cm on-screen) between the outline and the impression.



ORIENTATION OF CENTERFIRE CARTRIDGE CASES



CENTERFIRE

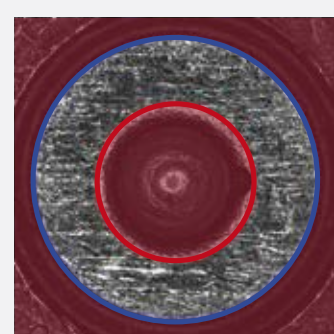
BREECH FACE OUTLINE

BLUE CIRCLE

On outer edge of primer.

RED CIRCLE

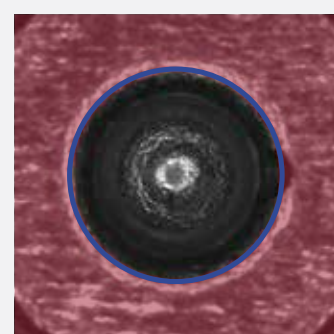
Placed around firing pin impression, outside any washout.



FIRING PIN OUTLINE

BLUE CIRCLE

Placed around firing pin impression, inside any washout.



RECTANGULAR

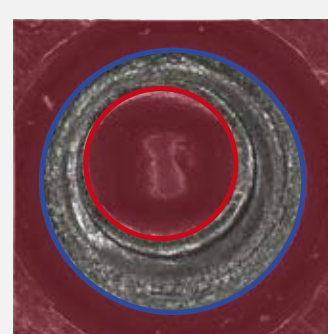
BREECH FACE OUTLINE

BLUE CIRCLE

On outer edge of primer.

RED CIRCLE

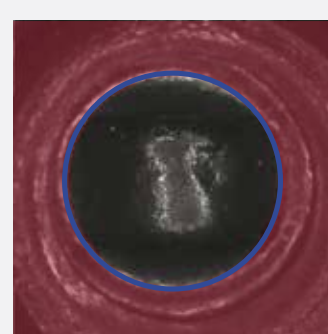
Centered on firing pin impression and placed on outer edge of washout-prone area.



FIRING PIN OUTLINE

BLUE CIRCLE

Centered on bottom of firing pin impression and extended to include the four corners of the mark.



FLOWBACK

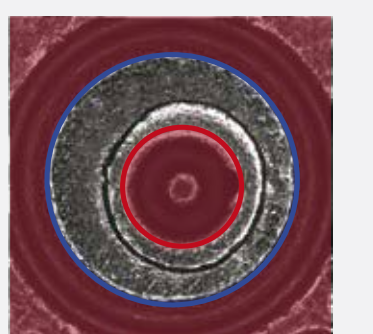
BREECH FACE OUTLINE

BLUE CIRCLE

On outer edge of primer.

RED CIRCLE

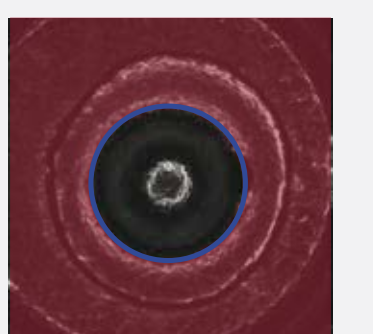
Placed around firing pin impression, outside any washout.



FIRING PIN OUTLINE

BLUE CIRCLE

Placed around firing pin impression, inside any washout.



ELLIPTICAL (GLOCK) - WITHOUT APERTURE FLOWBACK

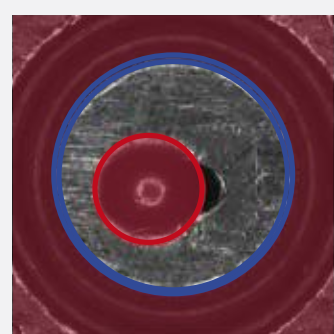
BREECH FACE OUTLINE

BLUE CIRCLE

On outer edge of primer.

RED CIRCLE

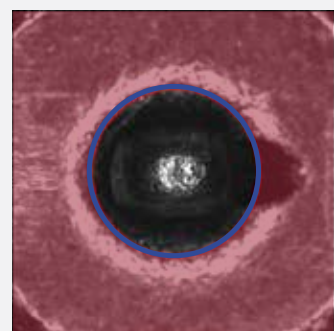
Centered on firing pin impression and placed on outer edge of washout-prone area.



FIRING PIN OUTLINE

BLUE CIRCLE

Centered on bottom of firing pin impression and extended to include the four corners of the mark.



ELLIPTICAL (GLOCK) - WITH APERTURE FLOWBACK

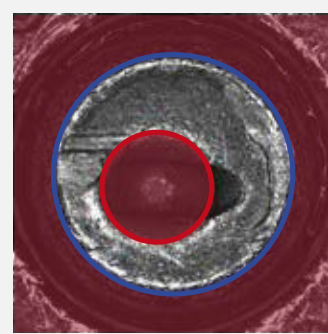
BREECH FACE OUTLINE

BLUE CIRCLE

On outer edge of primer.

RED CIRCLE

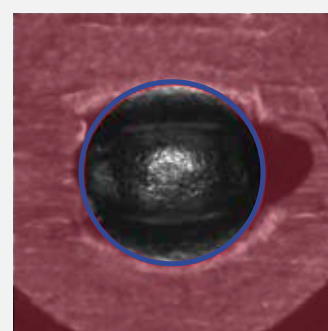
Centered on firing pin impression and placed inside distinctive markings.



FIRING PIN OUTLINE

BLUE CIRCLE

Centered on bottom of firing pin impression and extended to include the four corners of the mark.



*RED SHADING INDICATES UNCORRELATED AREAS.

WHEN IN DOUBT, TRUST THE AUTOMATIC OUTLINE POSITIONING.

For further information, email: forensic.support@leadsonline.com