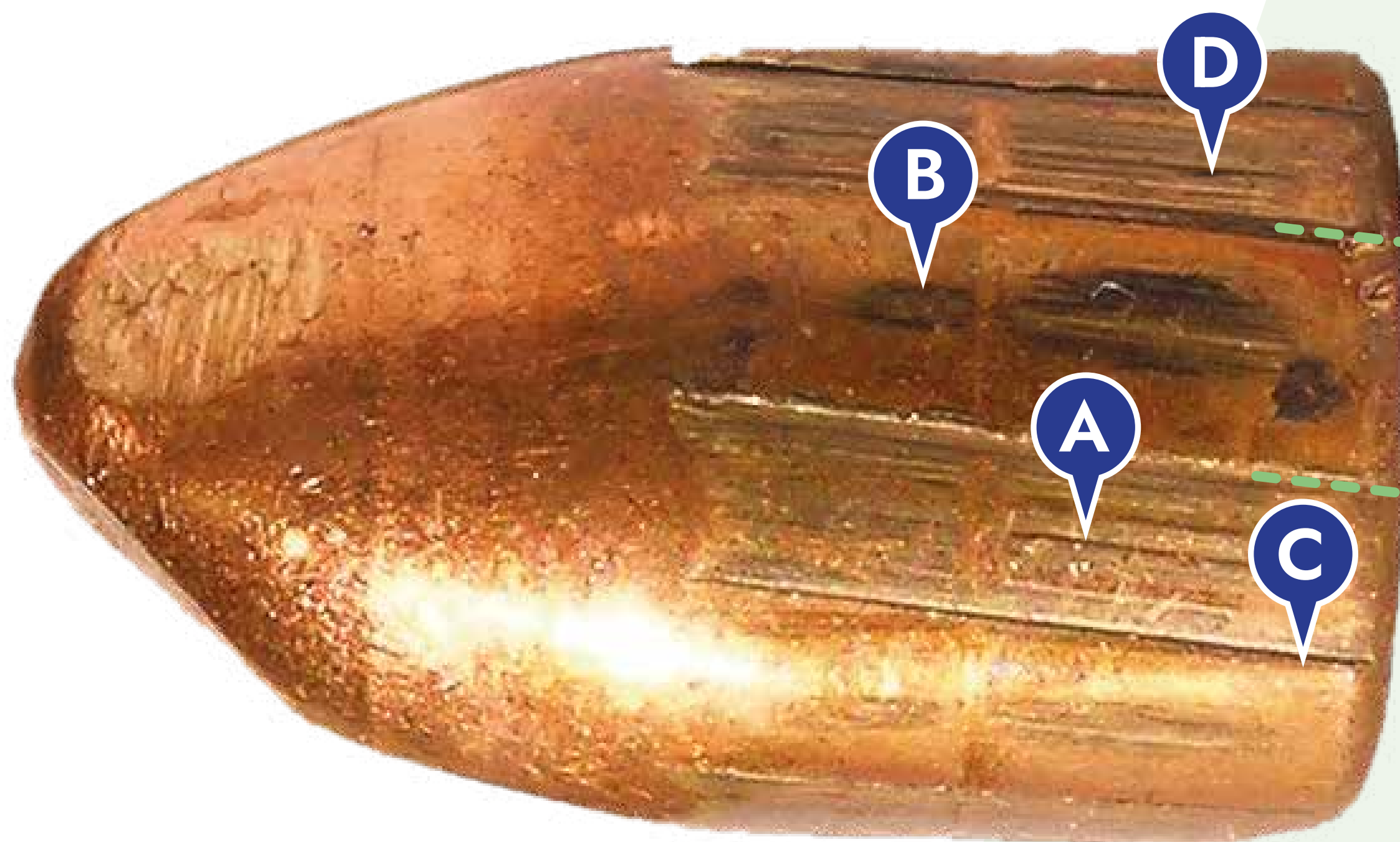




# IBIS | BULLETTRAX

## REFERENCE: BULLET



**A** **LEA**  
The areas on a fired bullet's surface that were engraved by the raised lands within a rifled barrel.  
(Land Engraved Area)

**B** **GEA**  
The areas on a fired bullet's surface that were engraved by the recessed grooves within a rifled barrel.  
(Groove Engraved Area)

**C** **SHOULDER**  
The areas on a fired bullet's surface that transition between the higher GEAs and the lower LEAs.

**D** **STRIATION**  
The linear pattern of abrasions on the fired bullet's surface that were caused by contact with the microscopic imperfections within the rifled barrel's bore.

**E** **TWIST**  
The direction and rate of turn of the rifling helix: left or right.

